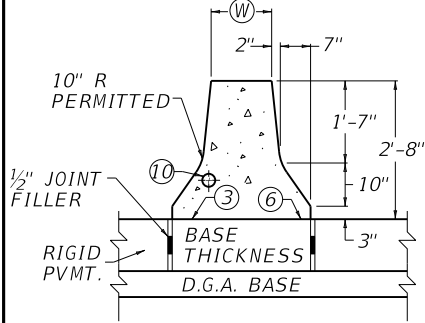
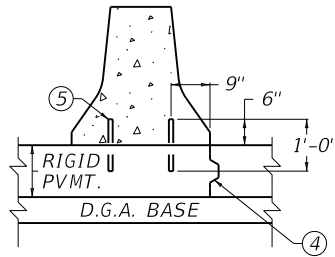


TYPE 9A,
12A OR 14A



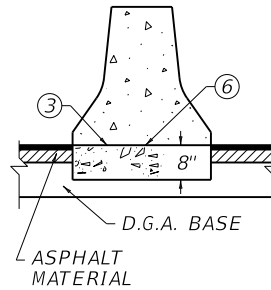
NEW RIGID PAVEMENT

TYPE 9B,
12B OR 14B



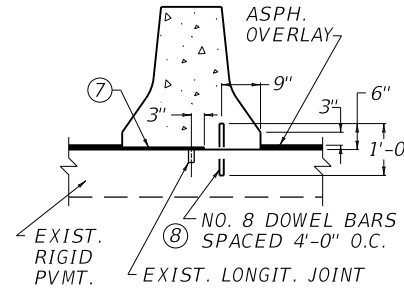
NEW FLEXIBLE PAVEMENT

TYPE 9C,
12C OR 14C



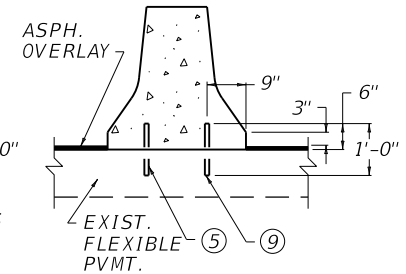
NEW FLEXIBLE PAVEMENT

TYPE 9D,
12D OR 14D



NEW FLEXIBLE
OVERLAY OVER
EXISTING RIGID
PAVEMENT

TYPE 9E,
12E OR 14E



NEW FLEXIBLE
OVERLAY OVER
EXISTING FLEXIBLE
PAVEMENT

~ NOTES ~

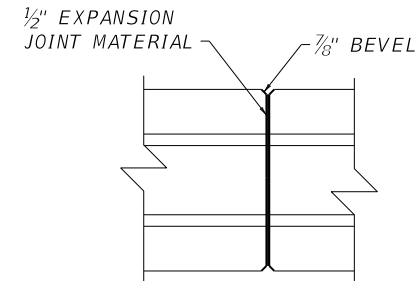
BID ITEM AND UNIT TO BID

CONC MEDIAN BARRIER TYPE ⊕ ⊕ LF

⊕ 9, 12, OR 14 DEPENDING ON W

⊕ A, B, C, D, OR E DEPENDING ON PAVEMENT TYPE.

1. FOR WALLS IN TRANSITION AND SEPARATE SEGMENT WALLS, SEE CUR. STD. DWG. RBM-015. FOR APPROPRIATE BID ITEMS.
2. THE CONTRACT UNIT PRICE PER LINEAR FOOT FOR CONCRETE MEDIAN BARRIER INCLUDING THE BASE IN TYPES A AND C SHALL BE FULL COMPENSATION FOR ALL MATERIALS, EQUIPMENT, LABOR AND INCIDENTALS NECESSARY TO COMPLETE THE WORK.
- ③ WHEN A CONSTRUCTION JOINT IS USED, DOWEL BARS WILL BE REQUIRED AS SHOWN WITH TYPE 9B, 12B, OR 14B BARRIER. SEE NOTE 5.
- ④ LONGITUDINAL CONSTRUCTION JOINT WITHOUT TIE BARS IS REQUIRED AND SHALL BE PLACED AT THE LOCATION SHOWN OR MAY BE INSTALLED AT THE CORRESPONDING POINT ON THE OPPOSITE SIDE OF THE BARRIER, AT THE OPTION OF THE CONTRACTOR. IT SHALL BE REQUIRED ON THE LOW SIDE OF A SUPERELEVATED SECTION.
- ⑤ NO. 8 DOWEL BARS SPACED 4'-0" O.C. AND STAGGERED 2'-0".
- ⑥ CONSTRUCTION JOINT PERMITTED WHEN FIXED FORMS OR SLIP FORMS ARE USED.
- ⑦ POLYETHYLENE (6 MILS THICK) BOND BREAKER.
- ⑧ PAVEMENT SHALL BE DRILLED AND BARS GROUTED.
- ⑨ BARS SHALL BE EITHER DRILLED AND GROUTED OR DRIVEN.
- ⑩ 3" RACEWAY (TYPICAL) SEE ELSEWHERE IN THE PLANS FOR LOCATION AND PAYMENT FOR RACEWAY WHEN REQUIRED.



EXPANSION JOINT DETAIL

APPROXIMATE QUANTITIES PER LINEAR FOOT

TYPE	CONC. - CU YD			STEEL - POUNDS		
	(W)					
	9"	12"	14"	9"	12"	14"
A	0.18	0.20	0.21	▲ 1.34	▲ 1.34	▲ 1.34
B	0.13	0.15	0.16	1.34	1.34	1.34
C	0.18	0.20	0.21	▲ 1.34	▲ 1.34	▲ 1.34
D	0.14	0.16	0.17	0.67	0.67	0.67
E	0.14	0.16	0.17	1.34	1.34	1.34

▲ WHEN REQUIRED

CONCRETE QUANTITIES SHOWN INCLUDE 8" BASE THICKNESS FOR TYPE A, BUT DO NOT INCLUDE QUANTITIES NECESSARY FOR ASPHALT OVERLAY THICKNESS SHOWN FOR TYPE D AND E.

USE WITH CUR. STD. DWG.
RBM-015

KENTUCKY DEPARTMENT OF HIGHWAYS	
CONCRETE MEDIAN BARRIER FIXED-FORM OR SLIP-FORM (PERMANENT)	
STANDARD DRAWING NO. RBM-001-11	
SUBMITTED	DATE
APPROVED	DATE